

4 Lightness Mode

You can press the power button once to switch all of the light bulbs on. If you press the power button second time, then there will be 3 bulbs still on. If you press the power button third time, there will be 2 light bulbs turn on. When you press the power button fourth time, there will be only one light bulb on. Press it fifth time, then all of the light bulbs will be power off. And if you press the power button one more time, all of the three light bulds will trun on again.

Adjustable Brightness

As for the "+" button, the brightness of the light bulb will increases by degrees every time you press the button until the light bulb flash twice which means the brightness reach a maximum. Vice versa, the brightness of the light bulb will decreases by degrees every time you press the "-" until the light bulb flash twice which means the brightness reach its minimum.

Preparation Before Using

1. Please install the product in the location you require.
2. It is recommended to keep a distance of 30 - 45cm between the product and the plant.
3. The recommended duration of light cultivation for plants is 8 - 12 hours per day. For the better growth of your plant, please do not use the light for over 16 hours.
4. Please make sure there is enough water for plant to grow.

Application

1. Flowers and plants: tulip, carnation, peony, lily, rose, etc.
2. Vegetables: pepper, eggplant, tomato, cabbage, lettuce, etc.

EN / 05

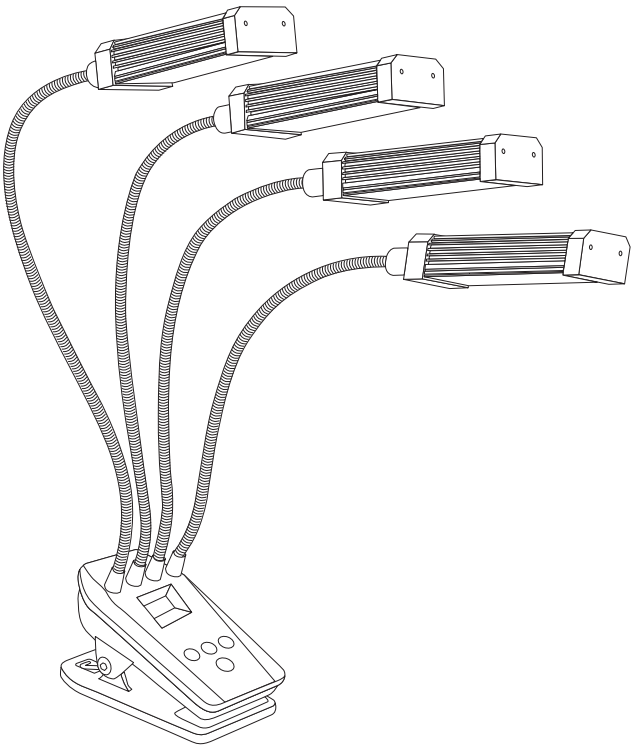
3. Various succulent plants.
4. Also suitable for indoor garden or indoor potted landscapes.

Precautions

1. Do not soak the product in water and please prevent it from rain or dust.
2. Please do not put the light in the place with high salinity or sulfur.
3. Do not expose the product to rain, snow, fire, or any other adverse conditions.
4. Do not subject the product to excessive physical vibration or shock.
5. Do not touch the Led light body surface when the power is on.
6. Do not disassemble the product or convert the internal structure.
7. Alcohol, thinner and other chemical solvent may corrode the product, especially the LCD display. Therefore, please just use a piece of clean wet cloth to wipe the product.
8. Please ensure that children use this product under the supervision of adults.
9. Please do not attach external timer or extension cord with the plant grow light. Otherwise, the build-in timer might get damaged and thus could not work as usual.
10. The grow light should be clipped on the edge with the depth that close to the maximum angle of the clip. Also, the surface on which the grow clip should be wide enough so that the clip can completely stick on the surface.
11. If the grow light could not trun on as usual, please verify the connection of the light bulds and adapter. Please trun off the power before you verify the problem. Then, screw up all of the three light bulbs and make sure the 11.adapter does firmly plug into the socket.

EN / 06

MUIZLUX
LED Grow Light
User Manual



Model:SP312D-C

Sunnypower New Energy Co.,Ltd
Address:2-3/F,side B,4 Lin,Caifa Industriai City ,No.181,Renmin Road,Fuyao Street,Longhua District,Shenzhen,China
Website: www.muizlux.com
Email:support@muizlux.com



Introduction

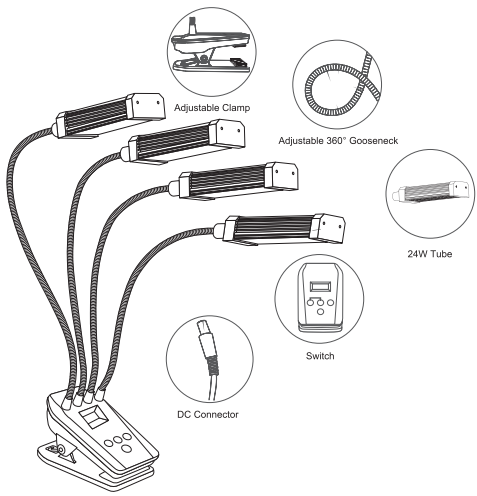
1. Thank you for purchasing our LED grow light!
2. Please read this user manual carefully before using this product and keep this user manual properly for reference.
3. In order to provide better product service, we will keep promoting the user manual and product.
4. If you have any question about the product, please feel free to contact us by email.
Email Address: support@muizlux.com

Specifications

Model	SP312C
Number of lamp holder	4PCS
Lamp	192PCS LEDs
Rated Power	96W
Red;Blue;White	96;48;48
Spectral Wavelength	380-800nm
Beam Angle	120°
Irradiation Angle	360°
Operating voltage	12V
Timer Mode	0H10min---23H50min
Spectral Patterns	Red & Blud Spectrum
Dimming Mode	0%~100% Stepless Adjusted
Work Temperature	-20℃~+65℃
Lifespan	>50000H
IP Grade	IP44

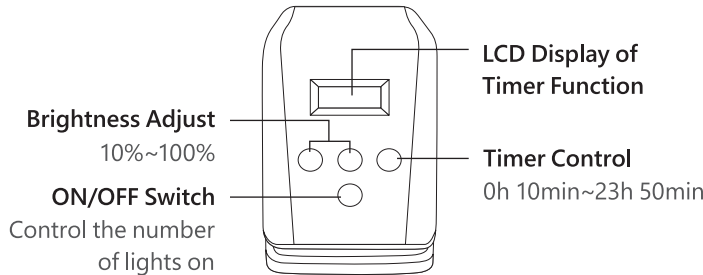
EN / 01

Overview



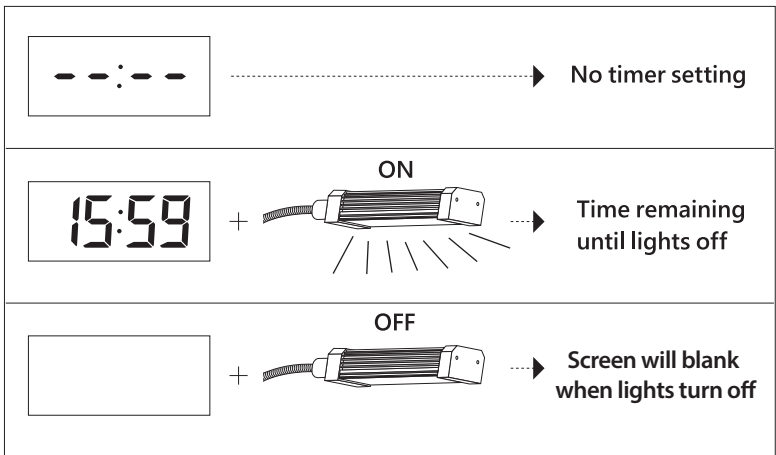
Quick Guide

The LED Growing light with adjustable timer will work automatically once the programme is set. To keep the timer cycling, please do not let the power goes off. When you switch off the product or disconnect the power from the adapter while it is working, it means that the timer setting will be reset. At this point you can reset the timer as needed.



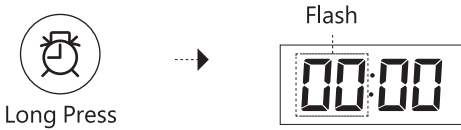
EN / 02

LCD Display

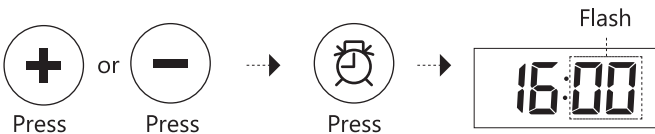


Timer Function

Step 1: Long press (timer icon) button to start setting.



Step 2: Press (+) / (-) button to adjust the hour, then press (timer icon) button to confirm. This "hour" part can be adjusted from 0 to 23.



EN / 03

Step 3: After finishing the hour setting, Press (+) / (-) button to adjust the minute, then press (timer icon) button to confirm and back to standard mode. This "minute" part can be adjusted from 0 to 50. Each time the (+) / (-) is pressed, the timer will increase/decrease by 10 minutes



Step 4: When the above settings are completed, the timer function will take effect immediately and the screen will show the time remaining before the lights are turned off.

Note:

1. During normal operation of the timer, press the (timer icon) button to view the last time setting.
2. When you switch off the product or disconnect the power from the adapter while it is working, it means that the timer setting will be reset. At this point you can reset the timer as needed.
3. The auto on and off timer is work on a 24-hour cycle. When you set the timer mode, the LED grow light will keep giving off light for the time you set and then enter sleeping mode. After that, the LED grow light will automatically light on the next day at the same time when you set the timer.

EN / 04